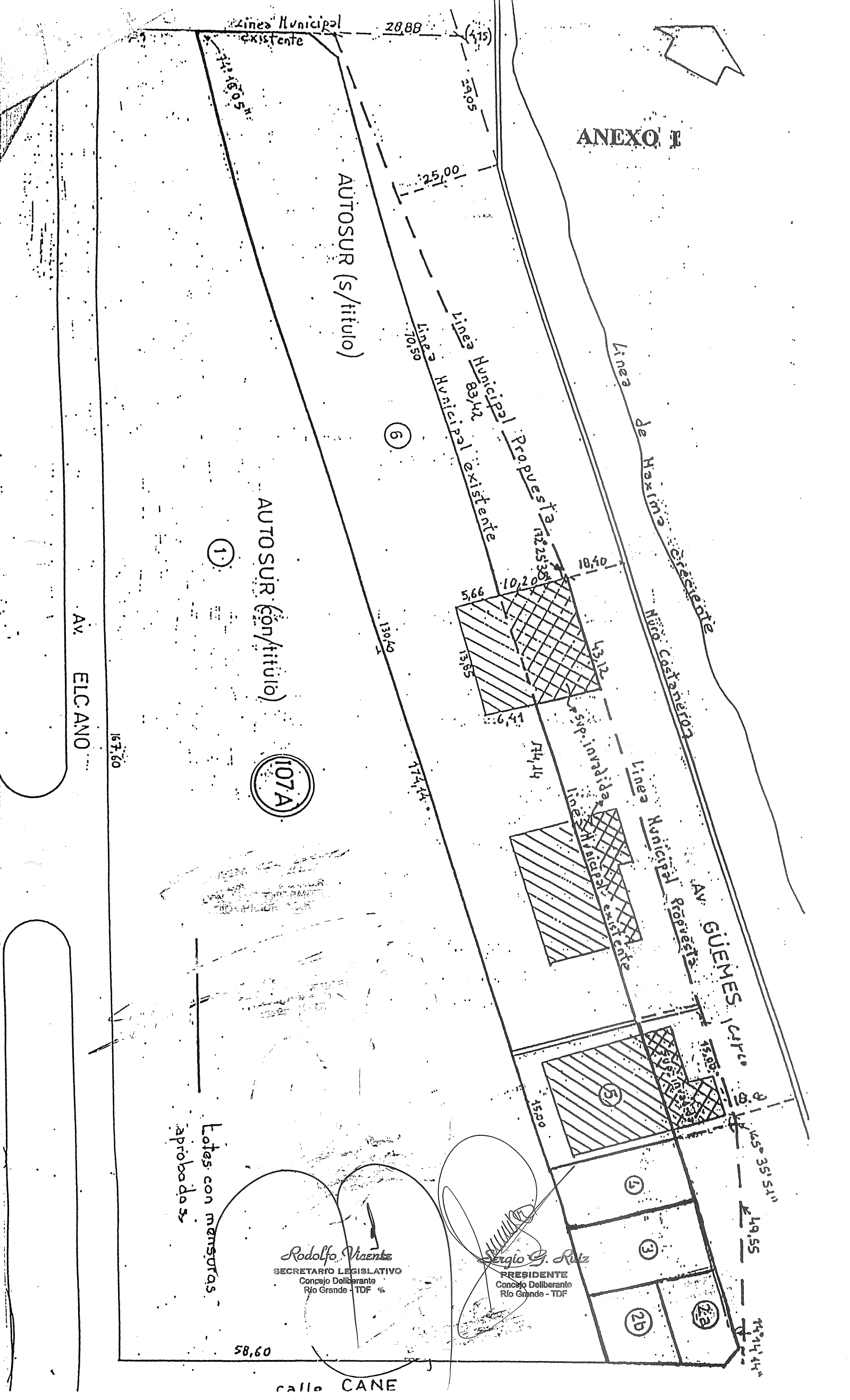


ANEXO I



Línea Municipal existente 28,88 (415)

12,16,05

AUTOSUR (s/titulo)

6

1

AUTOSUR (con/titulo)

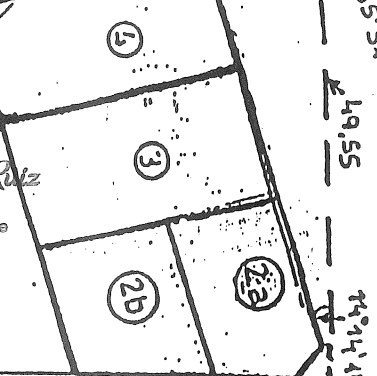
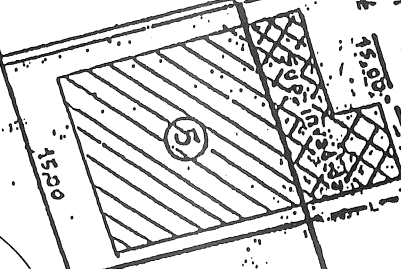
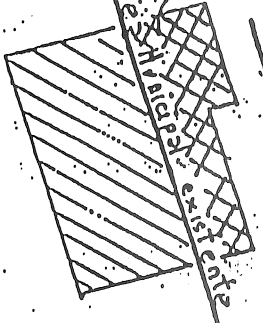
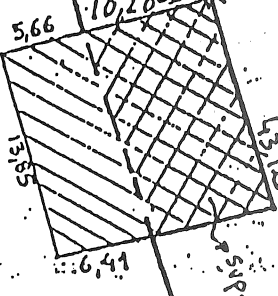
107A

AV. ELCANO

167,60

130,40

174,44



Lotes con mensuras aprobadas

Rodolfo Vicente
SECRETARIO LEGISLATIVO
Concejo Deliberante
Rio Grande - TDF

Sergio G. Ruiz
PRESIDENTE
Concejo Deliberante
Rio Grande - TDF

58,60

CALLE CANE